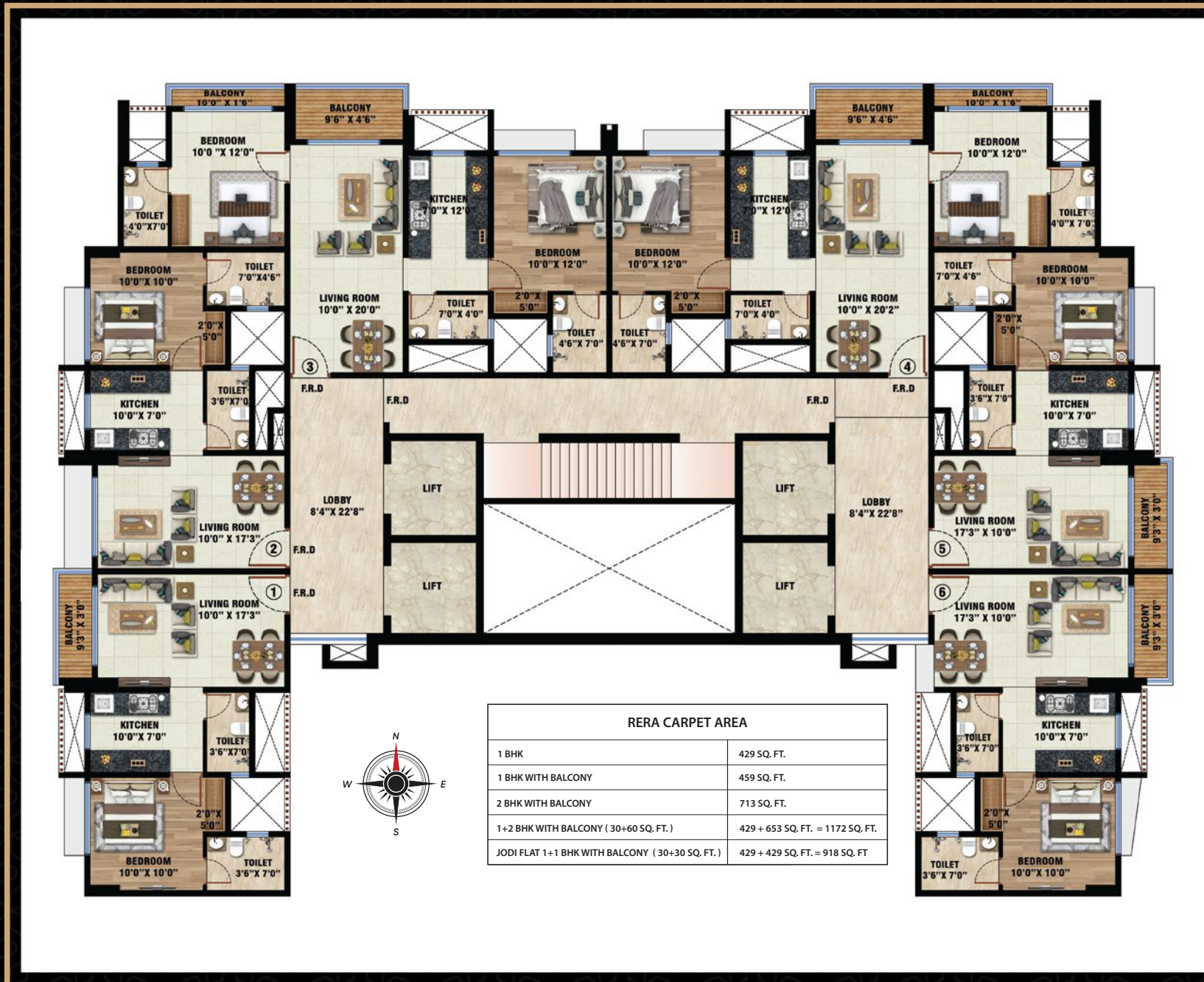




PLAN BOOK

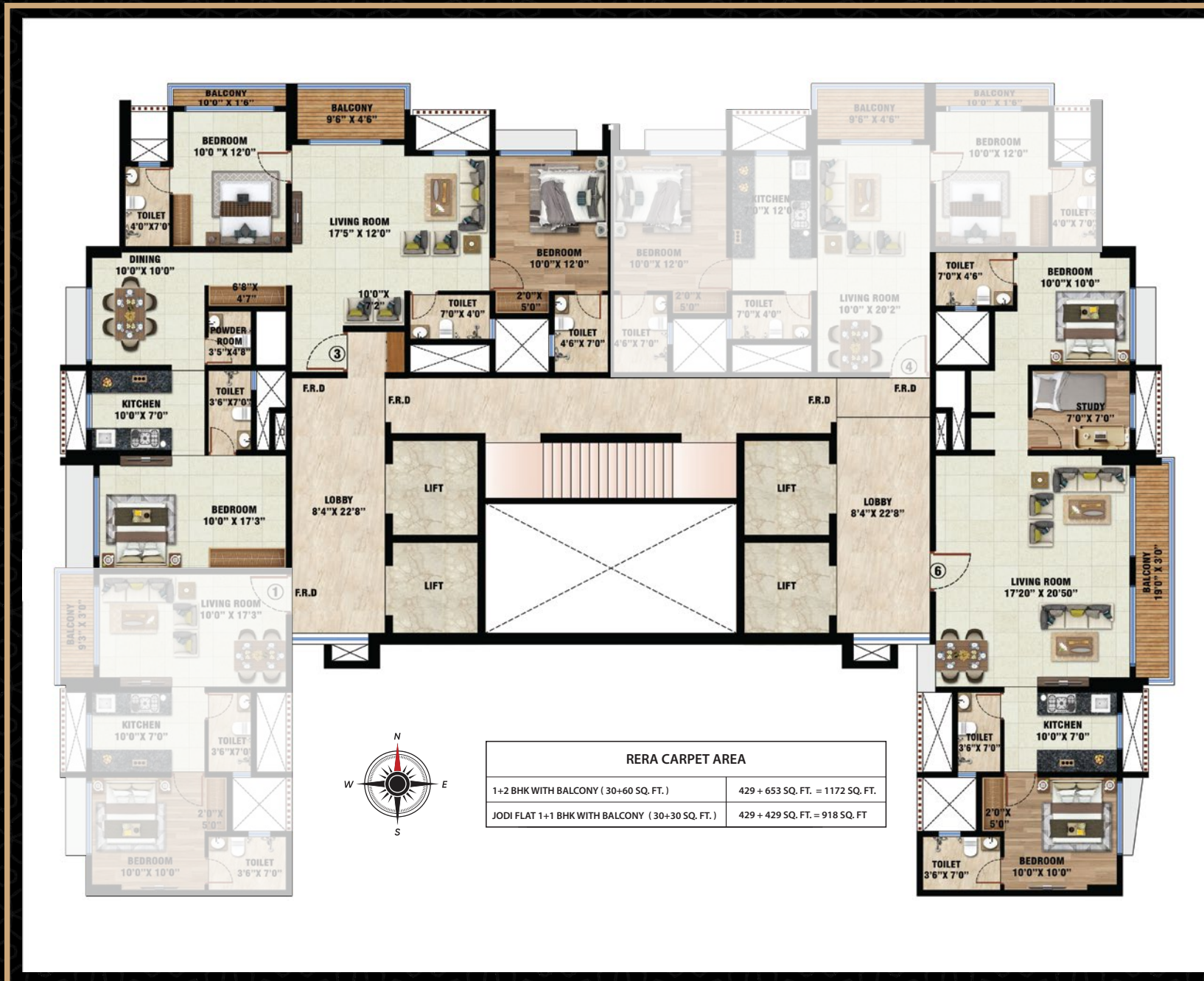


# Typical floor plan





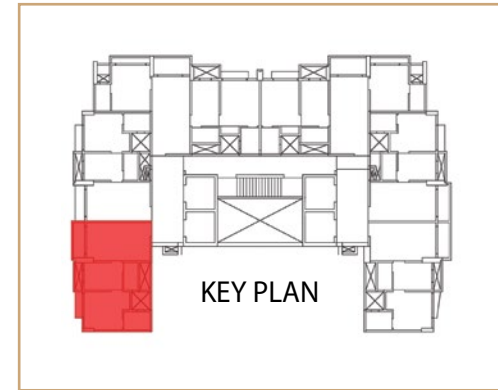
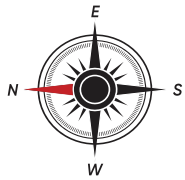
# Jodi Apartment





# 1 BHK Typical Plan

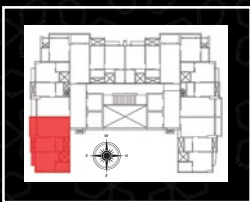
## 1 BHK



RERA CARPET AREA	
1 BHK	429 SQ. FT.
1 BHK WITH BALCONY	459 SQ. FT.



# 1BHK 3D Plan

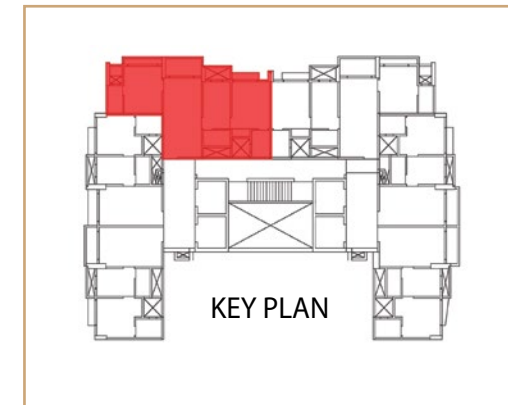
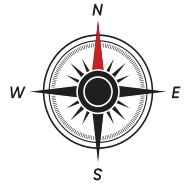
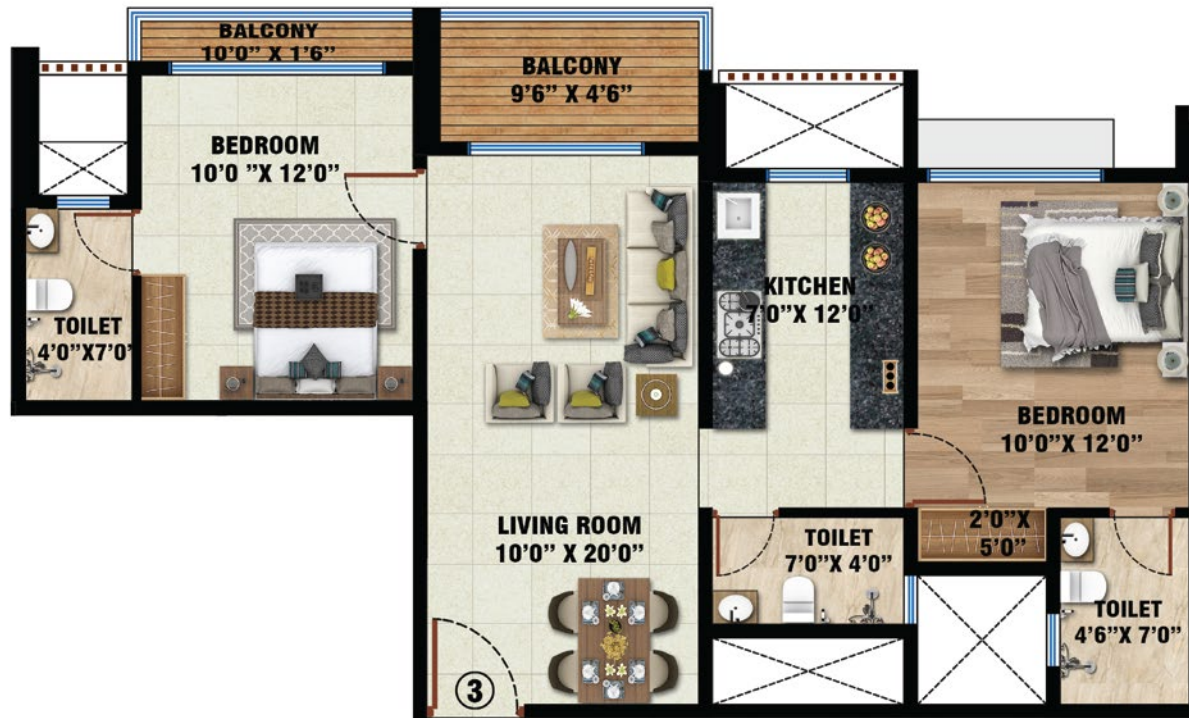


RERA CARPET AREA	
1 BHK	429 SQ. FT.
1 BHK WITH BALCONY	459 SQ. FT.



# 2 BHK Typical Plan

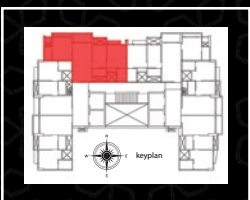
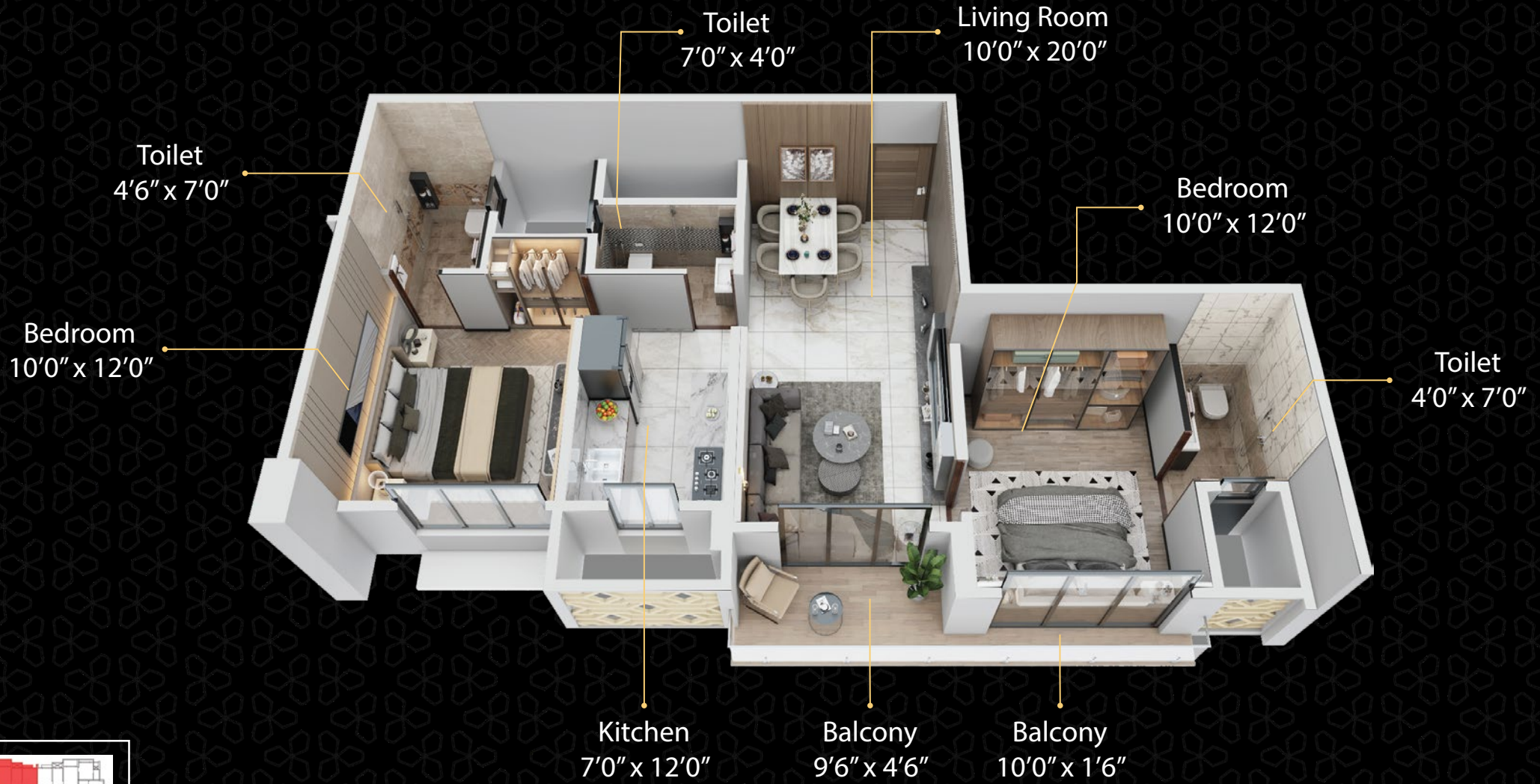
## 2 BHK



RERA CARPET AREA	
2 BHK WITH BALCONY	713 SQ. FT.



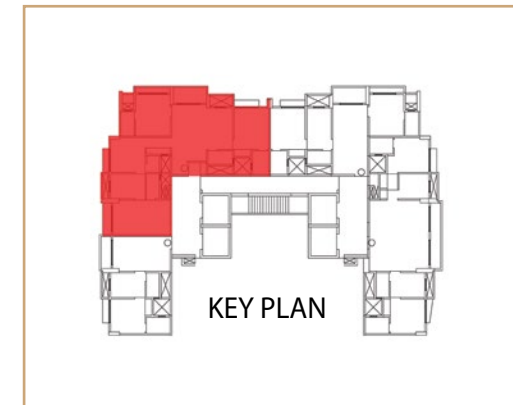
# 2BHK 3D Plan



RERA CARPET AREA	
2 BHK WITH BALCONY	713 SQ. FT.

# 1+2 BHK Typical Plan

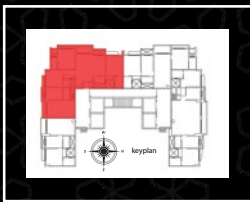
## 1 + 2 BHK



RERA CARPET AREA	
1+2 BHK WITH BALCONY (30+60 SQ. FT.)	429 + 653 SQ. FT. = 1172 SQ. FT.



# 1 + 2 BHK 3D Plan

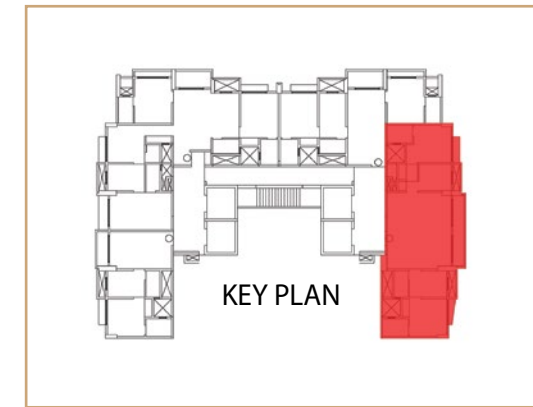
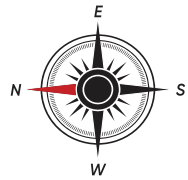


RERA CARPET AREA	
1+2 BHK WITH BALCONY (30+60 SQ. FT.)	429 + 653 SQ. FT. = 1172 SQ. FT.



# 1+1 BHK Jodi Typical Plan

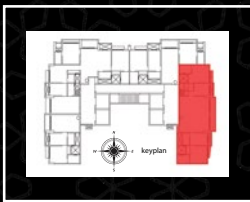
## 1 + 1 BHK



RERA CARPET AREA	
JODI FLAT 1+1 BHK WITH BALCONY ( 30+30 SQ. FT.)	429 + 429 SQ. FT. = 918 SQ. FT



# 1 + 1 BHK 3D Plan



RERA CARPET AREA	
JODI FLAT 1+1 BHK WITH BALCONY (30+30 SQ. FT.)	429 + 429 SQ. FT. = 918 SQ. FT



A Project By:



Site Address: CTS 1A{PT}, Oshiwara, Opposite Vicino Mall, New Link Road,  
Andheri West, Mumbai 400102.

Project website: [www.dreamaspire.in](http://www.dreamaspire.in) | +91 85919 50044

Office Address: Dream India Builders, Office no 8, Vicino Mall, New Link Road,  
Andheri West, Mumbai 400102. Corporate website: [www.dreamindiagroup.com](http://www.dreamindiagroup.com)

email: [info@dreamindiagroup.com](mailto:info@dreamindiagroup.com)

Structural Consultant:

**StruBuild Consultants LLP**

Strategic Marketing Partner

**ASPECT**  
PROPERTY CONSULTANTS



Rera No. P51800053836  
[www.maharerait.mahaonline.gov.in](http://www.maharerait.mahaonline.gov.in)

**Disclaimer:** By using or accessing the brochure, you agree with the Disclaimer without any qualification or limitation. The Developer / Owner reserves the right to terminate, revoke, modify, alter, add and delete any one or more of the terms and conditions outlined in the brochure. The Developer / Owner shall be under no obligation to notify the user of the amendment to the terms and conditions and the user shall be bound by such amended terms and conditions. Computer generated images, walkthroughs and render images used on this brochure are the artist's impression and are an indicative of the actual designs. The imagery used on the brochure may not represent actuals or may be indicative of style only. The information on this brochure is presented as general information and no representation or warranty is expressly or impliedly given as to its accuracy, completeness or correctness. It does not constitute part of a legal offer or contract. The user must verify all the details and specifications, including but not limited to the area, amenities, specifications, services prior to concluding any decision for buying any unit in any of our projects/ developments While enough care is taken by the Developer / Owner to ensure that information in the brochure are up to date, accurate and correct, the readers/ users are requested to make their independent enquiry before relying upon the same.



# Jodi 1+2 BHK Floor plan





